

Read these instructions before commencing installation & retain them for future reference.

IP67    0.3m  240V 1.2W

These fittings are Class I and require an Earth connection

### Important Information

It is recommended that luminaires are installed and fitted by a qualified electrician ensuring the installation complies with current IEE wiring regulations & local building control. These products are designed for connection to a 240V 50Hz supply. Any broken or damaged parts should be replaced as soon as possible. KSR will not accept responsibility for any claims arising from a poor installation.

### General Maintenance

General maintenance and cleaning should be performed at least quarterly. Clean product outer using a damp cloth. Non abrasive cleaner can be used for heavy deposits. After any maintenance, remember to check all seals are intact.

### Installation Procedure

Familiarize yourself with the luminaire and ensure the power is turned off before installing the fitting.  
Take time to check all factory glands are tight and seals are in place. This luminaire can be installed in decking, patio slabs or concrete. For any application a cut out 46mm is required.  
Using a suitable IP rated connector (Not supplied) terminate the wiring L-Live (Brown), N-(Neutral) & E - (Green/Yellow).  
Please note the KSR3185 Loop through connector will not go through the cut out so may not be suitable for all ground types.  
Dress the cabling under the luminaire and push it into the hole.  
Turn on the power and test the luminaire.

These fittings are not suitable for ceiling/soffit applications and should only be installed as uplights

Note: This luminaire requires a 240V AC supply, no external driver is required.

Mains Supply	Luminaire
Live - Brown	L - Brown
Earth - Green/Yellow	⊕ - Earth
Neutral - Blue	N - Blue

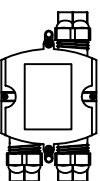


Available finish:- Aluminium

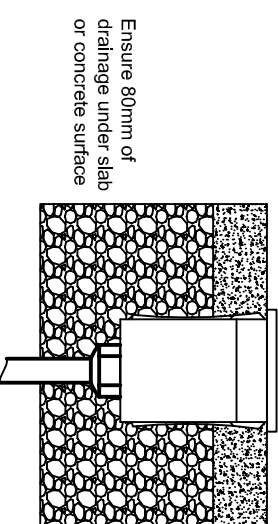
Optional IP Rated Connectors  
Not Supplied



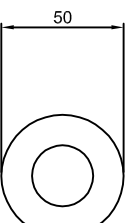
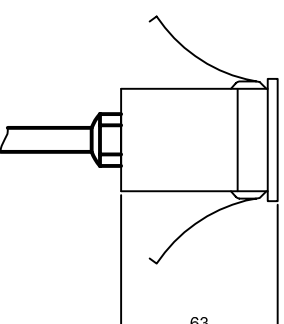
KSR3184 In Line Connector



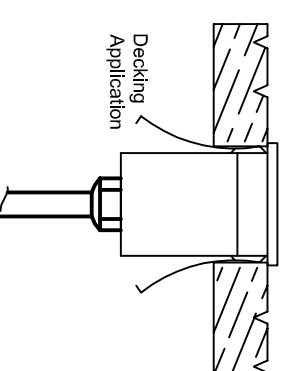
KSR3185 Loop Through Connector



Ensure 80mm of drainage under slab or concrete surface



ØCut out  
46mm  
+/-1mm



Decking Application

**Lamp Details**  
KSR1248 - 1.2W Integral LED Module  
Non Replaceable  
6000K Cool White

KSR Lighting Aftersales: 023 92 674343  
E-mail: [info@ksr-lighting.co.uk](mailto:info@ksr-lighting.co.uk)

**KSR**  
LIGHTING

KSR Lighting Ltd, Unit E Hazleton Interchange, Lakesmere Road, Horndean, Hampshire, PO8 9JU