

Read these instructions before commencing installation & retain them for future reference.

Available finish:- Anthracite

IP65   240V 1.4W

Important Information

It is recommended that luminaires are installed and fitted by a qualified electrician ensuring the installation complies with current IEE wiring regulations & local building control. These products are designed for connection to a 240V supply. Any broken or damaged parts should be replaced as soon as possible. KSR will not accept responsibility for any claims arising from a poor installation.

General Maintenance

General maintenance and cleaning should be performed at least quarterly. Clean product outer using a damp cloth and dry.

Installation Procedure

Ensure mains supply is turned off. Cut a 120mm hole for fitting the luminaire directly into an existing wall (without the plastic retainer) or cement the plastic retainer into new build wall. Remove the 3 retaining screws and cover (Fig. 1). Terminate wiring to the circuit board using the push fit terminals, these fittings can be looped in and out (Brown - Live and Blue - Neutral). Replace cover ensuring any supplied gaskets, etc are in place and secure using retaining screws. Ensure all the glands are tightened and place fitting into cut-out/retainer. Turn on mains supply and test.

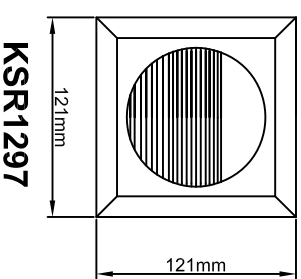
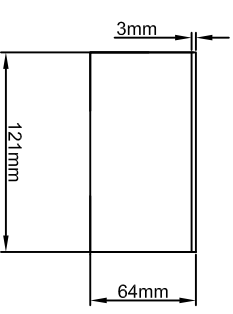
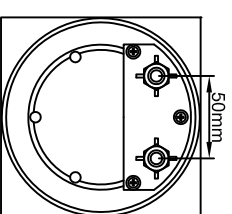
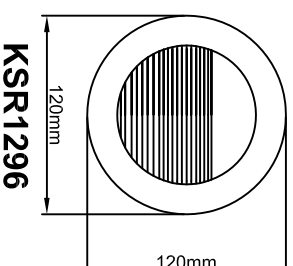
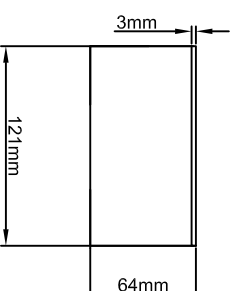
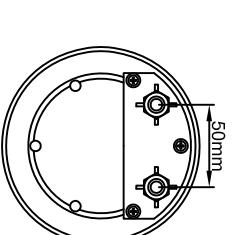
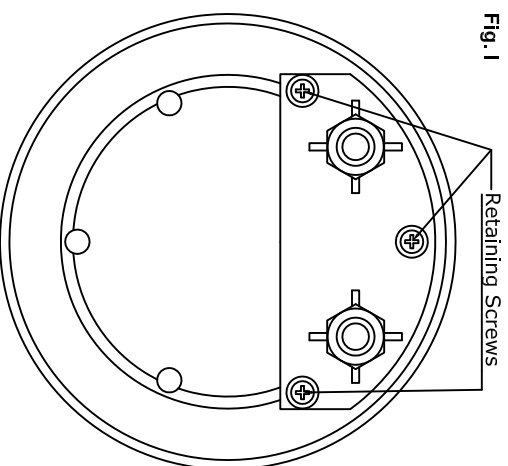


Fig. 1



Lamp Details
Lamp Cap: N/A
LED Wattage: 1.4W (14x 0.1W)

KSR Lighting After-sales: 023 92 674343
 E-mail: info@ksr-lighting.co.uk



Product Information